



How to Login to Windows with SecuGen Fingerprint Readers using WBF

[1. Introduction](#)

[2. Installation](#)

[3. How to Enroll Fingerprints and Login to Windows 7, 8, Server 2008 R2, 2012](#)

[4. How to Enroll Fingerprints and Login to Windows 8.1](#)

[5. Note about Privacy of Fingerprints](#)

1. Introduction

Starting with Windows 7, Windows provides built-in fingerprint support called the Windows Biometric Framework (WBF). With WBF and a SecuGen reader, you can quickly and easily login to Windows using your fingerprint. Additionally on Windows 8.1, you can securely purchase Windows Store apps and access them using your fingerprint. WBF provides a way to register, delete, and manage all your fingerprints associated with your Windows account, so that you remain in control of your fingerprints at all times.

What you need to get started

- This guide
- Supported SecuGen reader
- Internet connection

Supported operating systems

- Windows 8.1, 8, 7
- Windows Server 2012, 2008 Release 2

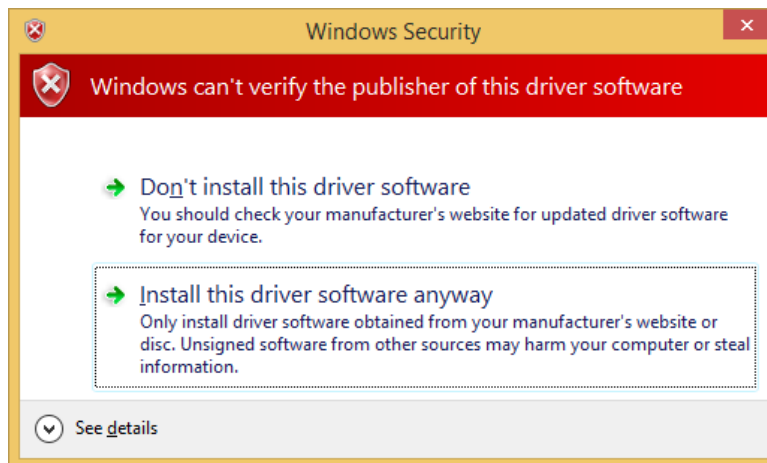
Supported SecuGen fingerprint readers and sensors

- Hamster Pro 20, Hamster IV, Hamster Plus, iD-USB SC, iD-USB SC/PIV, Keyboard Plus, OptiMouse Plus, Sensors: U20, FDU04/SDU04P, SDU03M/P, FDU03FR/FRS

2. Installation

2.1 Install SecuGen WBF Driver

Your PC must be connected to the Internet during installation. When you plug in a supported SecuGen fingerprint reader for the first time, the SecuGen WBF Driver will be automatically downloaded (from the Microsoft Windows Update website) and installed by Windows. If for any reason this does not happen, you can download it manually from SecuGen's website at www.secugen.com/download.



- If you see the message above, click on **Install this driver software anyway** to proceed with installation. (This message appears while the driver undergoes certification for Windows 8.1. The driver is safe to use as it has already been certified for Windows 7.)
- If you have previously installed other (non-WBF) SecuGen device drivers, you must uninstall those before installing the WBF driver. To uninstall, open the **Control Panel** and then open the **Device Manager**. Under **Biometric Devices**, right-click on the SecuGen device and then click **Uninstall**, with the option **Delete the driver software for this device** selected. After the driver has been uninstalled, unplug the fingerprint reader and plug it into the PC again. The WBF driver download and installation should start automatically.

2.2 Install SecuGen FMA (not required for Windows 8.1)

For Windows 8.1 Users:

Fingerprint management software is already built into Windows 8.1, therefore you do not have to install the SecuGen FMA. You can skip the rest of this section and proceed to [How to Enroll Fingerprints and Logon to Windows 8.1](#).

For all other Windows Users:

You will need to install the SecuGen Fingerprint Management Application (FMA), a small piece of software that allows you to register and manage your fingerprints. Click the appropriate link below to download the SecuGen FMA from SecuGen's website.

X86	http://www.secugen.com/download/SecuFMASetup.msi	(781 KB)
X64	http://www.secugen.com/download/SecuFMASetupx64.msi	(981 KB)

Save the file, and then double-click on it to install. After successful installation, **SecuGen fingerprint device** will be listed in the Biometric Devices Control Panel.

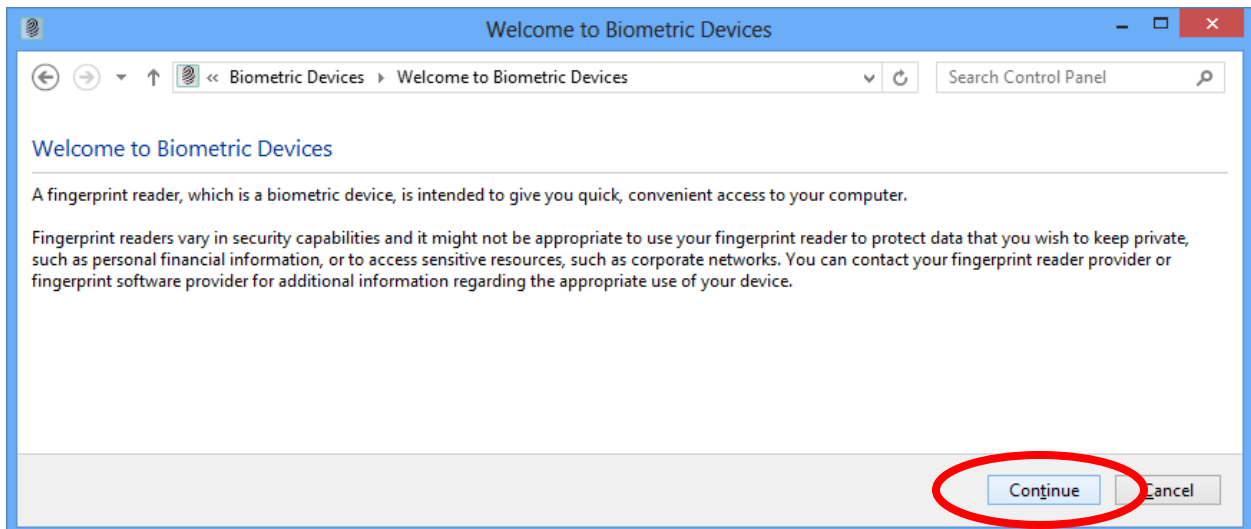


3. How to Enroll Fingerprints and Login to Windows 7, 8, Windows Server 2008 R2 and 2012

1. On Windows 7, 8, Windows Server 2008 R2 and 2012, the SecuGen Fingerprint Management Application (FMA) is used to enroll and delete fingerprints associated with your Windows account. The FMA is accessed through the Biometric Devices Control Panel. From the **Control Panel**, click on **Hardware and Sound**, and then click on **Biometric Devices**. Click on **Use your fingerprint with Windows** to open the FMA.



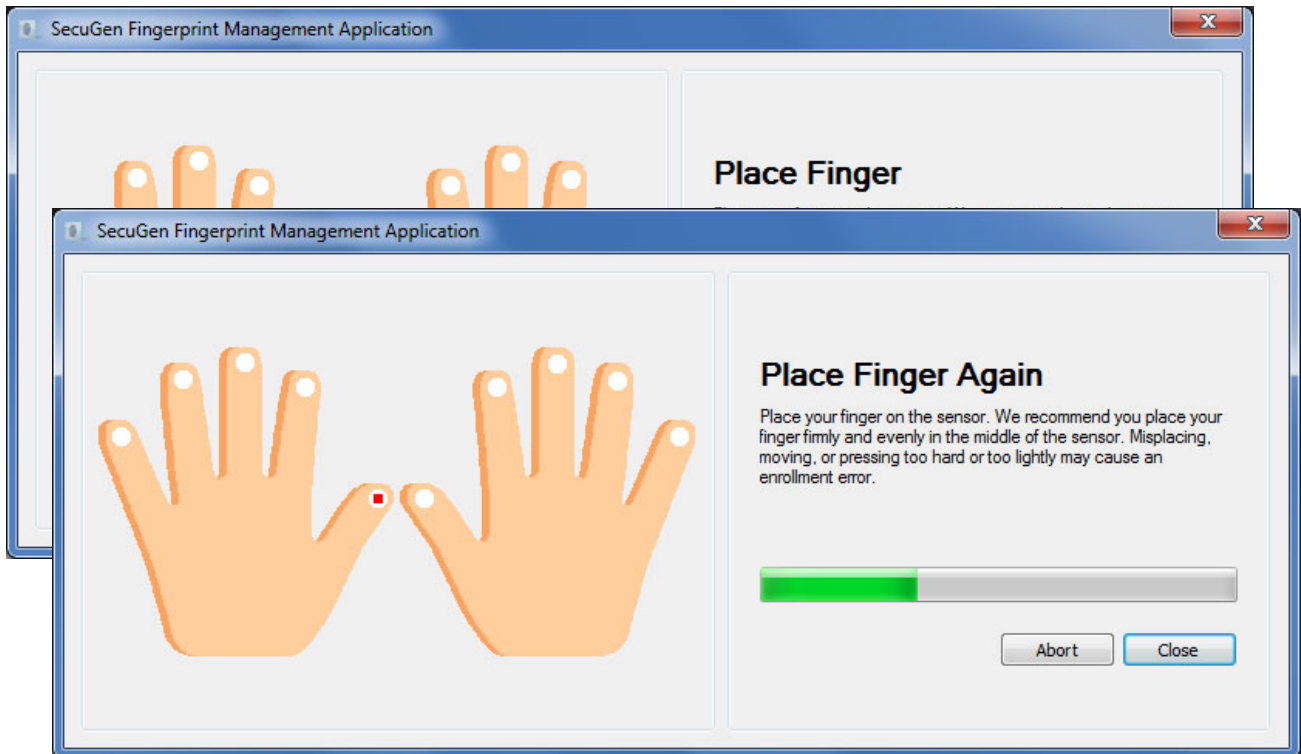
If the following window appears, click on **Continue**.



2. In the FMA window, select a finger to enroll by clicking on the white tip of the finger.



3. Place your selected finger on the reader. The FMA will ask you to release and place your finger again for a total of three scans to ensure proper enrollment.



4. If enrollment is successful, you can close the FMA window or select another finger to enroll.



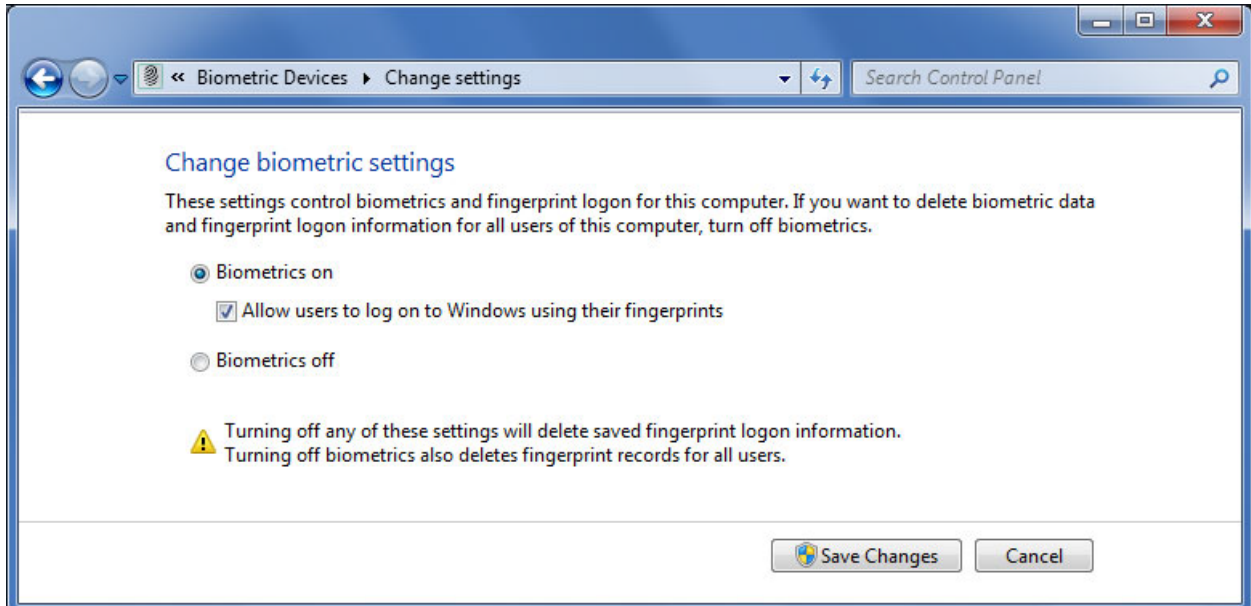
Note: If the tip of the finger is colored green, that finger has been successfully enrolled. To delete an already-enrolled finger, click on the green tip. After deleting, you can re-enroll that finger.

5. If you have closed the FMA, you can return to the FMA by clicking on **Manage your fingerprint data** from the Biometric Devices Control Panel (below).



6. To use your fingerprint to logon to Windows, Biometrics should be turned on. If the SecuGen WBF device driver is properly installed, it will be turned on by default. To change the biometric settings, click on **Change biometric settings** from the Biometric Devices Control Panel (above).

7. Select **Biometrics on** or **Biometrics off** to control fingerprint logon to Windows. To enable fingerprint logon to Windows, be sure to check the box **Allow users to log on to Windows using their fingerprints**. Click **Save** to save the changes.



8. When you first attempt to logon to Windows using your fingerprint, Windows will require you to enter your current password to verify your account info before enabling fingerprint logon. After this, you will be able to logon with your fingerprint.

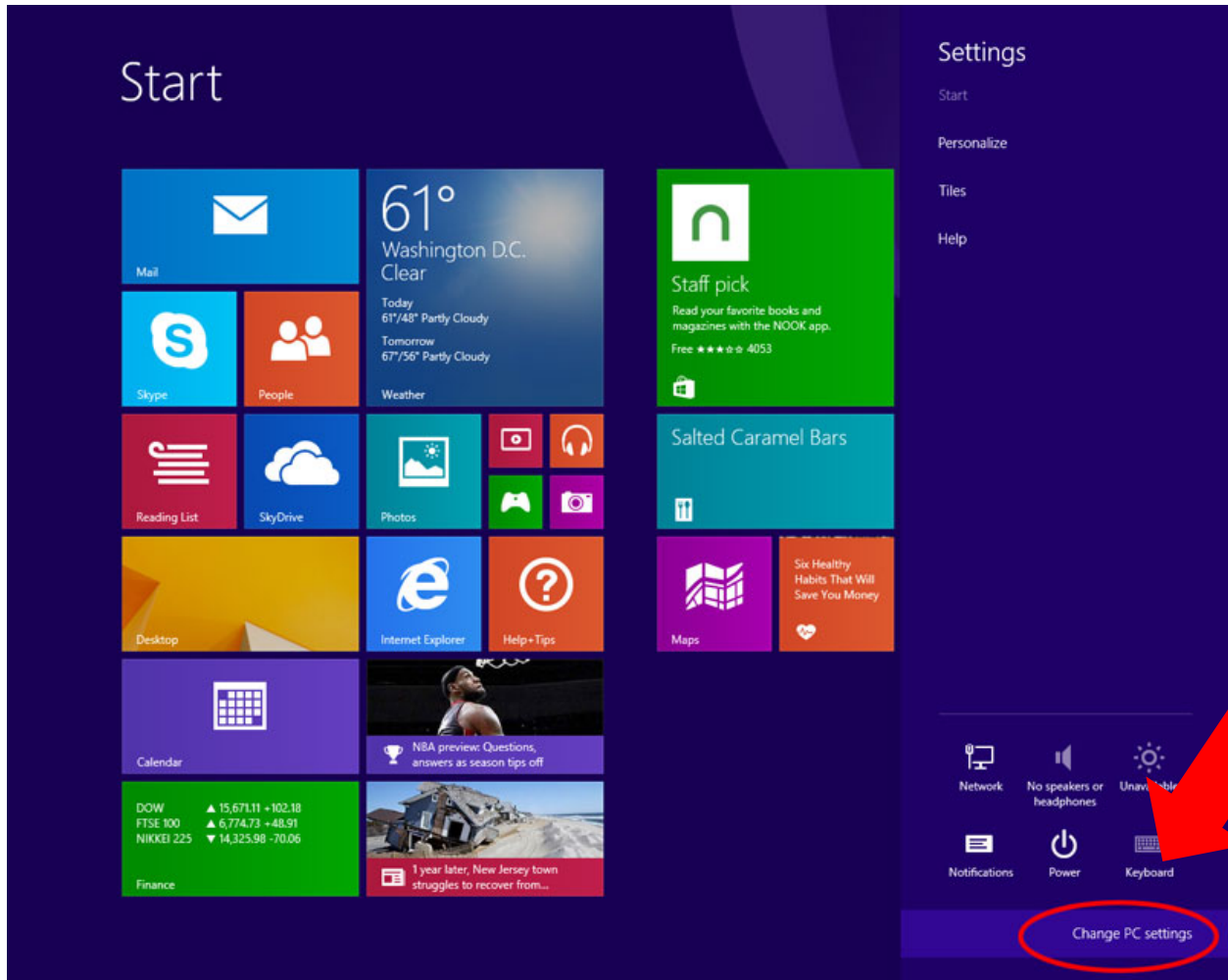


4. How to Enroll Fingerprints and Login to Windows 8.1

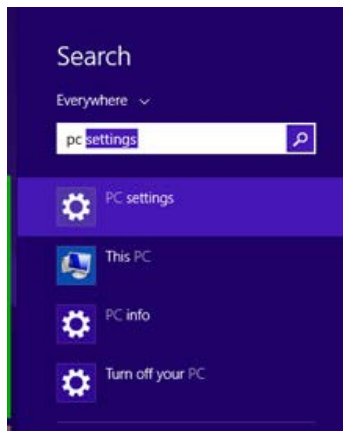
1. In Windows 8.1, fingerprints are enrolled and managed through your Accounts settings. To get to your settings, first move your mouse pointer all the way to the upper-right or lower-right corner of the screen until the Charms bar appears, and click on **Settings** at the bottom.



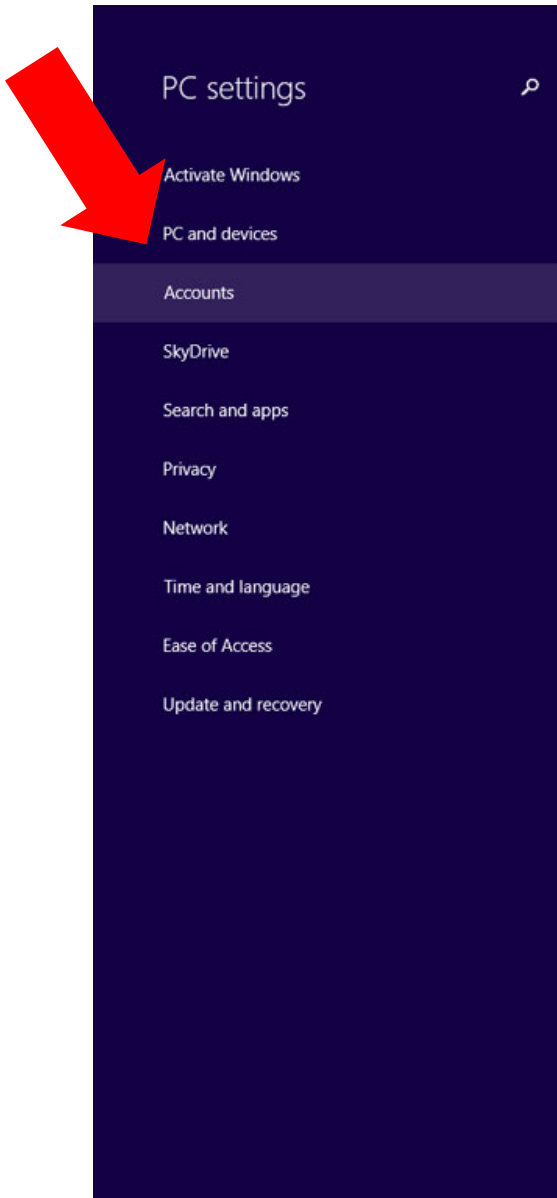
- At the bottom of the Settings bar, click on **Change PC settings**.



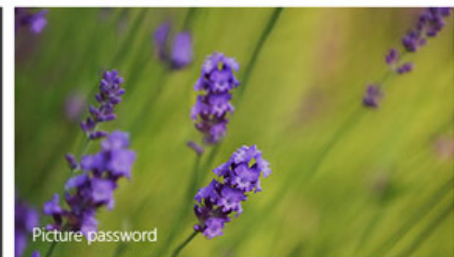
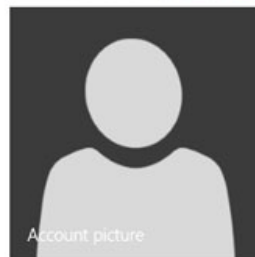
Alternatively, you may use the Search function from the Charms bar and type **“PC Settings”**.



3. From the **PC Settings** screen, select **Accounts** from the menu.

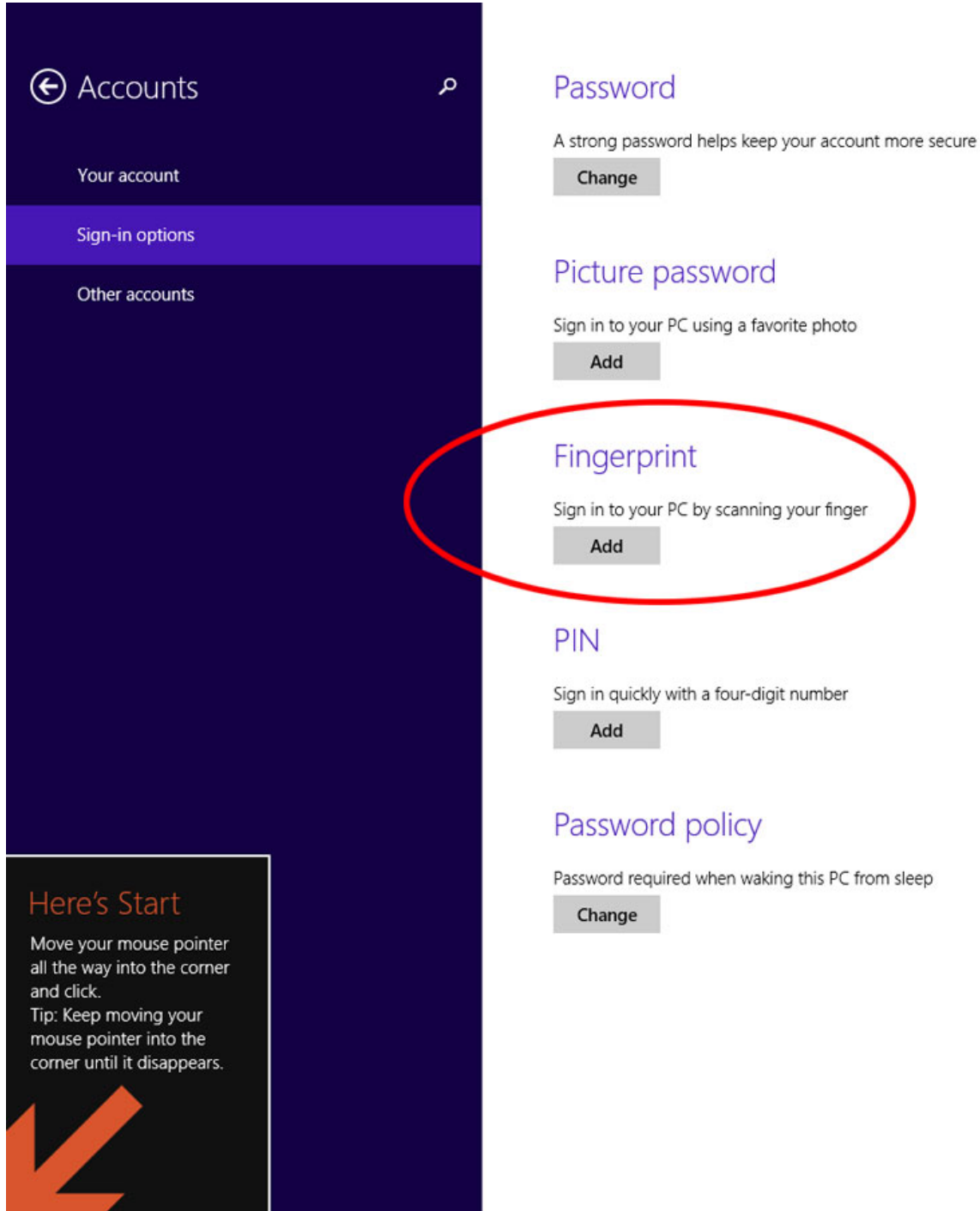


Personalize

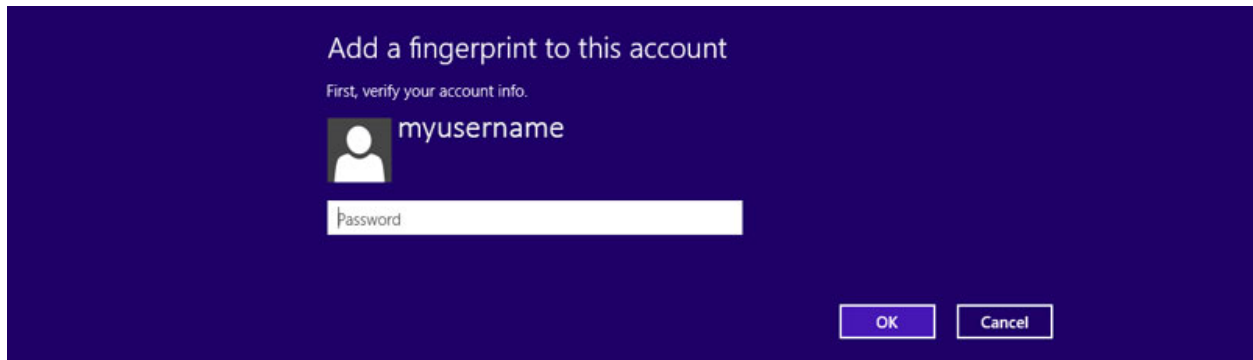


[View recently used settings](#)

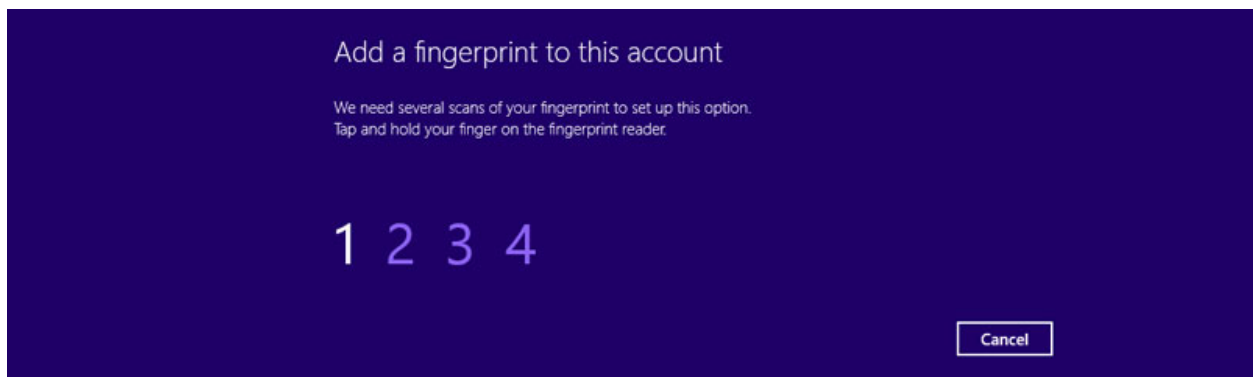
4. From the **Accounts** screen, select **Sign-in options**. There should be multiple options including Fingerprint listed in the middle. Click on **Add** under Fingerprint to add your fingerprint to your account.



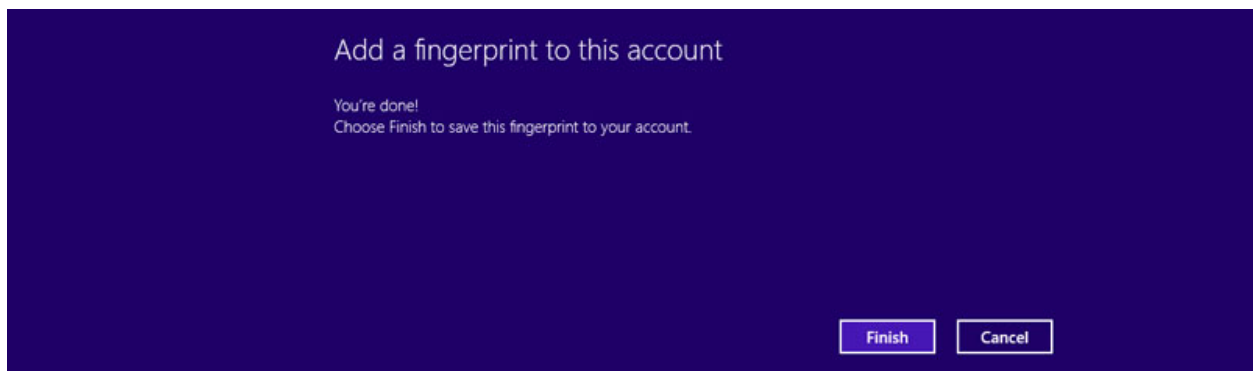
5. For security, Windows will ask for your password before accepting your fingerprint.



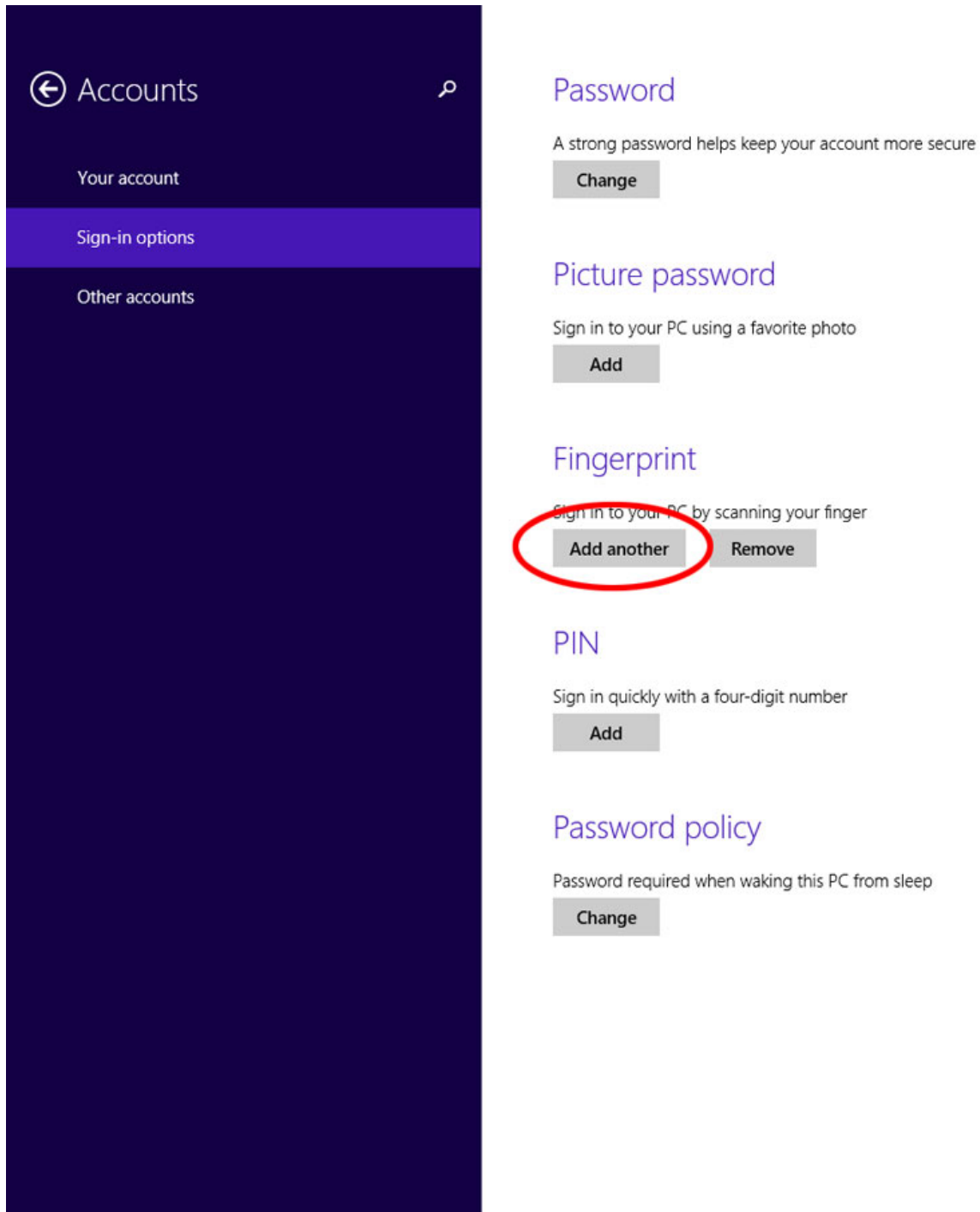
6. Place your finger on the fingerprint reader. Windows will require you to scan the same finger several times to ensure proper enrollment. Follow the prompts on the screen.



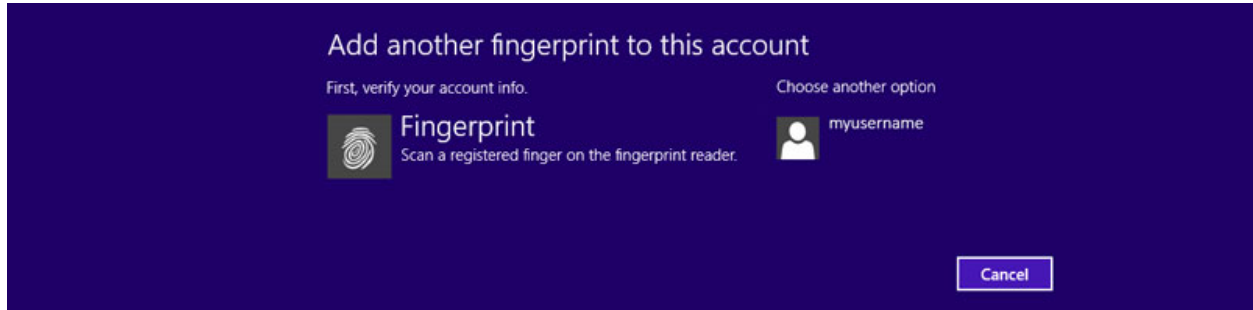
7. After you have successfully scanned the fingerprints of one finger, click on **Finish** to save this fingerprint to your account.



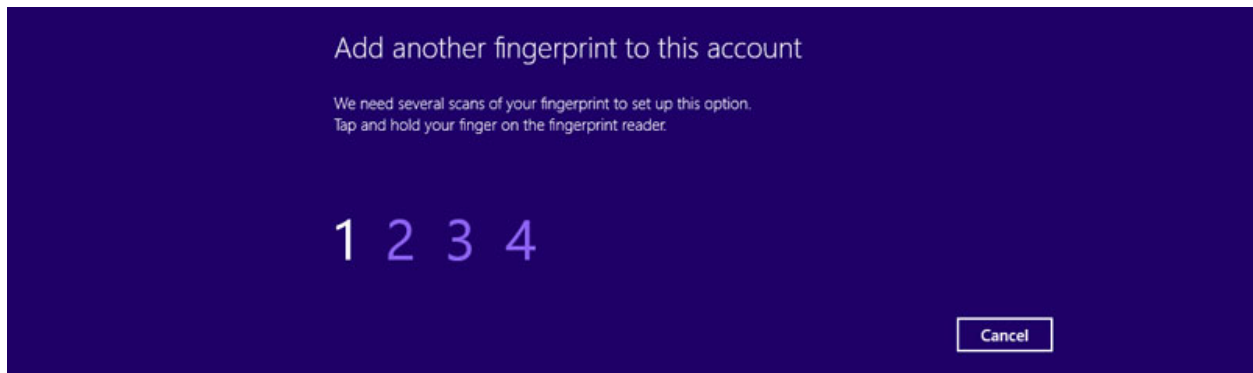
8. To add another fingerprint to your account, click on **Add another** under Fingerprint.



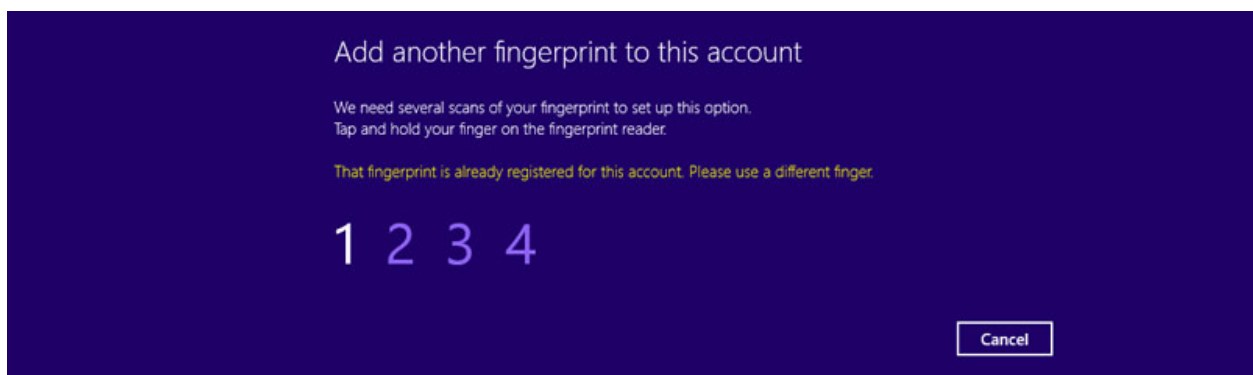
9. For security, Windows will ask for your fingerprint to verify your account info before accepting additional fingerprints. You can also choose another way to verify by clicking on **Choose another option**.



10. Repeat steps 6 and 7 to add another fingerprint.

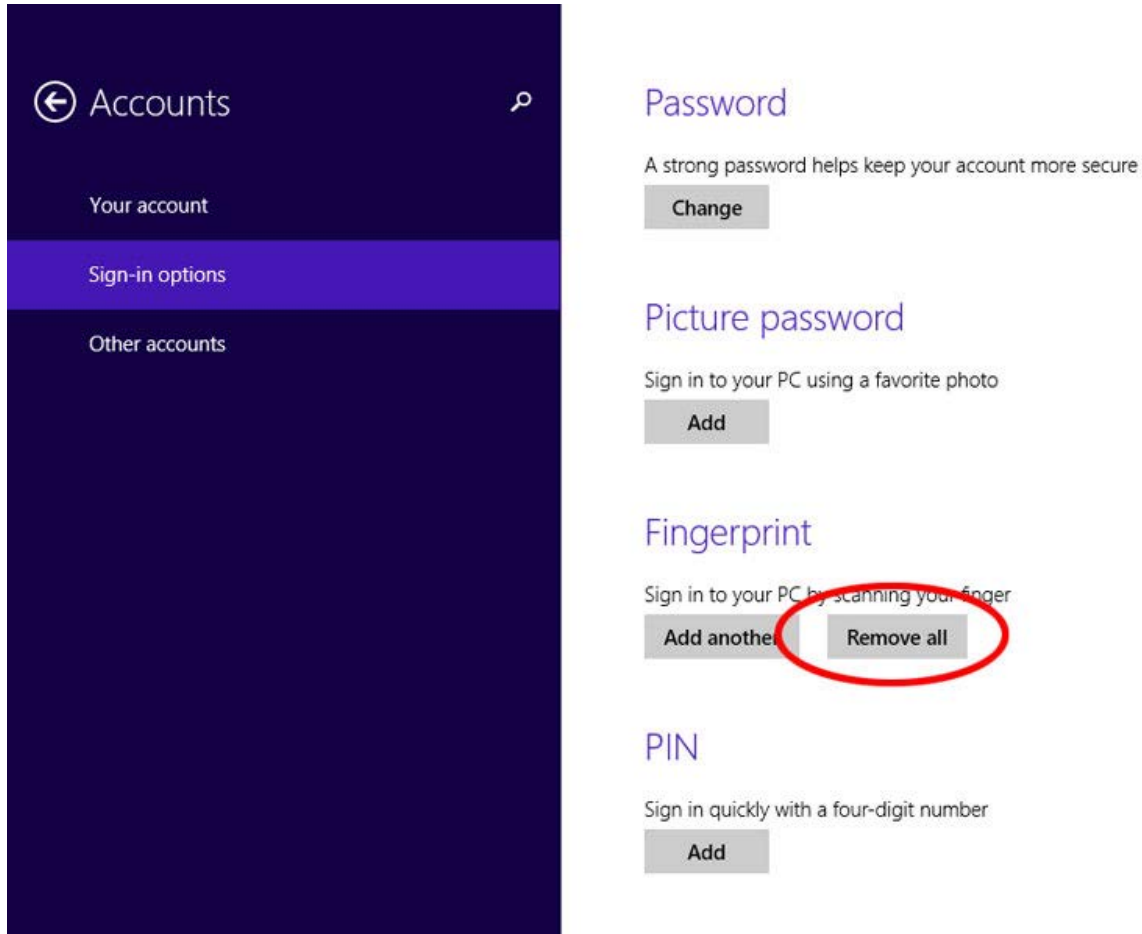


11. If you attempt to add a previously-registered finger, you will get an error message. Windows compares new fingerprints with all your registered fingerprints to avoid duplication.



12. After you have successfully added one or more fingerprints, you can now use any of your registered fingerprints to verify your account info when logging on to Windows or purchasing or accessing apps from the Windows Store. If you did not register all of your fingers, it may be helpful to record or remember which finger(s) you have registered so that you will know which one(s) to use for future authentication.

13. If you wish to remove your fingerprints from your account, you can do this easily by clicking **Remove all** from the Sign-in options screen. **Be careful!** This function will delete all of your registered fingerprints at one time.



5. Note about Privacy of Fingerprints

To protect the privacy of fingerprints, **images of fingerprint are not saved or stored** during enrollment and authentication. When a fingerprint is scanned, the unique features of the fingerprint called minutiae are identified, processed by a mathematical algorithm, and finally stored as a template. A fingerprint image cannot be reproduced from this template because the template does not carry enough data to form a fingerprint image.