

SecuGen

SecuGen® USB Fingerprint Reader User Guide

Installation, Usage, Care and Troubleshooting

© Copyright 1998-2018 SecuGen Corporation.

ALL RIGHTS RESERVED. Specifications are subject to change without notice. SecuGen, FDP01, FDP02, FDU01, FDU02, FDU03, FDU04, SDU03, SDU04, SecuGen Hamster, SecuGen OptiMouse, U10, and U20 are trademarks or registered trademarks of SecuGen Corporation. Microsoft, Windows, and the Windows logo are trademarks or registered trademarks of Microsoft Corporation in the United States and/or other countries. All other names or brands may be the property of their respective owners.

SecuGen USB Fingerprint Reader User Guide (SG1-007B-018)

Contents

CONSUMER NOTICES	III
BEFORE YOU BEGIN	IV
1. INTRODUCTION & INSTALLATION	5
TYPES OF USB FINGERPRINT READERS	5
SYSTEM REQUIREMENTS FOR WINDOWS.....	6
DRIVER INSTALLATION.....	6
2. HOW TO USE YOUR FINGERPRINT READER	7
FOR BEST RESULTS.....	7
HOW TO SCAN YOUR FINGER.....	8
FOR HAMSTER READERS EQUIPPED WITH AUTO-ON™	10
3. HOW TO ADJUST YOUR READER	11
4. HOW TO CARE FOR YOUR READER	12
5. ABOUT FINGERPRINT PRIVACY	13
6. TROUBLESHOOTING	14

Consumer Notices

FCC NOTICE

This equipment has been tested and found to comply with the limits for a Class B digital device, pursuant to Part 15 of the FCC Rules. These limits are designed to provide reasonable protection against harmful interference in a residential installation. This equipment generates, uses, and can radiate radio frequency energy and, if not installed and used in accordance with the instructions, may cause harmful interference to radio communications. However, there is no guarantee that interference will not occur in a particular installation. If this equipment does cause harmful interference to radio or television reception, which can be determined by turning the equipment off and on, the user is encouraged to try to correct the interference by one or more of the following measures: (1) Reorient or relocate the receiving antenna; (2) Increase the separation between the equipment and receiver; (3) Connect the equipment into an outlet on a circuit different from that to which the receiver is connected; or (4) Consult the dealer or an experienced radio/TV technician for help.

Changes or modifications not expressly approved by the party responsible for compliance to Part 15 of the FCC Rules could void the user's authority to operate the equipment.

CE NOTICE

This equipment has been tested and found to comply with the limits for a Class B or Class 2 digital device, pursuant to EN 55022 Rules. These limits are designed to provide reasonable protection against harmful interference when the equipment is operated in a commercial environment. This equipment generates, uses, and can radiate radio frequency energy and, if not installed and used in accordance with the instruction manual, may cause harmful interference to radio communications. Operation of this equipment in a residential area is likely to cause harmful interference in which case the user will be required to correct the interference at the expense of the user.

Changes or modifications not expressly approved by the party responsible for compliance to EN 55022 Rules could void the user's authority to operate the equipment.

This Class B digital apparatus meets all requirements of the Canadian Interference-Causing Equipment Regulations.

Cet appareil numérique de la classe B respecte toutes les exigences du Règlement sur le matériel brouilleur du Canada.

Before You Begin

About SecuGen

SecuGen (www.secugen.com) provides biometric products and development tools for development organizations that are creating physical and network security systems employing advanced fingerprint recognition technology. The company's comprehensive product line includes high quality optical fingerprint readers and sensor component, software and development kits that are used for developing innovative applications including Internet, enterprise network and desktop security, physical access control, time and attendance management and financial and medical records control. SecuGen patented products are renowned for their accuracy, reliability, ruggedness, and affordability. Based in Silicon Valley, SecuGen has been serving the global biometric community since 1998.

SecuGen Sensor Qualities

- **Excellent Image Quality:** Clear, distortion-free fingerprint images are generated using advanced, patented optical methods. Quality imaging yields better sampling for minutiae data extraction.
- **Durability:** Mechanical strength tests show resistance to impact, shock and scratches.
- **Powerful Software:** Precise, fast processing algorithm ensures efficiency and reliability.
- **Ruggedness and Versatility:** Solid engineering and superior materials allows for use under extreme conditions.
- **Ergonomic Design:** Compact, modular design for seamless integration into small devices, ease of use, and compatibility make SecuGen Sensors ideal for a broad range of applications.
- **Low Cost:** Products are developed to deliver high performance, with zero maintenance at very affordable prices for general and industrial use.

Advantages of SecuGen Sensors over Other Fingerprint Sensors

- Unique optical method captures fine details, even from dry skin
- Extremely low image-distortion for greater accuracy
- Resistance to damaging electrostatic discharge, moisture or corrosion
- Superior mechanical strength, wear-resistance and durability with no need for costly coatings
- Broad range of applicability, especially for use in extreme conditions and climates
- Low cost, long life, and no maintenance requirements – suitable for mass deployments

1. Introduction & Installation

Thank you for choosing SecuGen® USB Fingerprint Readers!

You will find many uses for SecuGen readers – versatile, high quality scanning devices that can be used for a variety of security applications. This guide explains the different types of SecuGen readers, guides you through installation, and provides tips on usage, care and troubleshooting.

Types of USB Fingerprint Readers

It is important to know which sensor your fingerprint reader is based on to ensure that it is correctly installed and configured on your system. If you are not certain, please refer to the chart below, which lists the model numbers and product names.

Sensor	Type	Model Number	Product Name
U20	Hamster	HU20	SecuGen Hamster Pro 20
	Hamster Pro Duo	XU20CL, XU20SCA, XU20SCP	SecuGen Hamster Pro Duo CL SecuGen Hamster Pro Duo SC/PIV
UPx	Hamster	HUPx	SecuGen Hamster Pro
U10	Hamster	HU10	SecuGen Hamster Pro 10
FDU04 SDU04P	Hamster	HFDU04, HSDU04P	SecuGen Hamster IV
	ID	XFDU04SC, XSDU04PSC	SecuGen ID-USB SC/PIV
FDU03 FDU03FR FDU03FRS SDU03M SDU03P	Hamster	HFDU03, HFDU03FR, HFDU03FRS, HSDU03M, HSDU03P	SecuGen Hamster Plus
	ID	XSDU03MSC	SecuGen ID -USB SC
	Mouse	MSDU03M2	SecuGen OptiMouse Plus
	Keyboard	KSDU03M	SecuGen Keyboard Plus
FDU02 FDU01	Hamster	HFDU01, HFDU02	SecuGen Hamster III
	Mouse	MFDU01, MFDU02	SecuGen OptiMouse III
	Keyboard	KFDU01, KFDU02	SecuGen Keyboard III

Note: We use the terms **reader** and **device** interchangeably to refer to the SecuGen fingerprint reader itself.

Minimum Requirements for Windows

- USB 1.1 port, USB 2.0 port, or USB hub (self-powered for OptiMouse or Keyboard)
- 32MB RAM
- 20MB available hard disk space

If you are installing an application based on platforms other than Windows, such as Android or Linux, please refer to the documentation provided by the maker of the application program.

Driver Installation

Before using your SecuGen fingerprint reader, drivers must be installed in one of the following ways.

For Windows users

Drivers are automatically installed after you plug in the reader for the first time.

If you have software for your reader

Drivers may already be included with the installation media.

To manually install device drivers

If neither of the above options is available, you may download the Windows device driver from SecuGen's website at www.secugen.com/download.

2. How to Use Your Fingerprint Reader

For best results

Why is image quality important?

SecuGen fingerprint recognition technology is based on minutiae: the unique feature points of a fingerprint. After a fingerprint is scanned, minutiae are extracted and processed into a template that will be used for biometric enrollment and matching. If the scanned fingerprint is unclear or does not have enough contrast, the minutiae may be inconsistently sampled, resulting in less accuracy and poor performance. Certain environments and skin conditions, such as wet or dry skin, can initially cause a fingerprint to appear too light or dark. The scanning quality of SecuGen readers can be manually or automatically adjusted to overcome the enrollment or matching problems that have commonly occurred with fingers that “don’t seem to work.” More information about this is available in the next section.

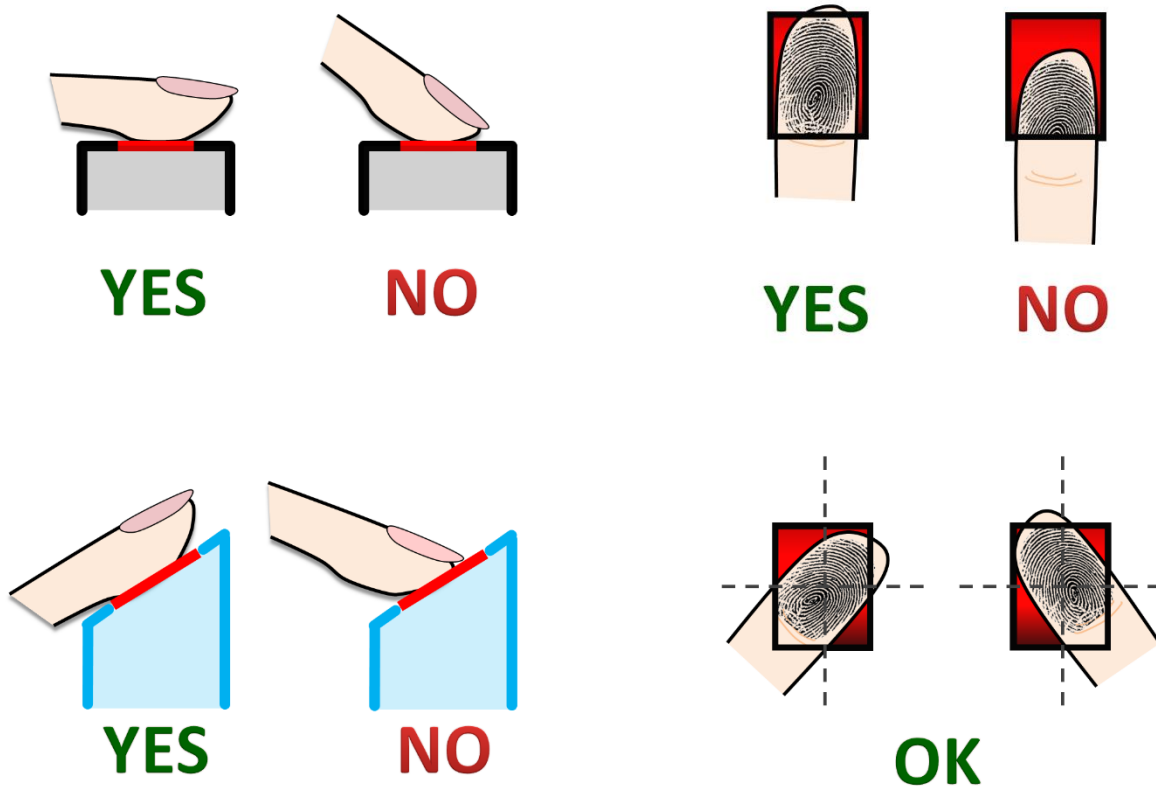
Proper placement is the key to good results

SecuGen's fingerprint extraction algorithm can extract the correct minutiae even without benefit of a perfect print. However, the proper placement of your finger during scanning can help give more consistent results for any biometric application. The suggestions below will help you get the best quality fingerprint to ensure better performance and reduce the chances for failure to enroll or match correctly.

How to scan your finger

Place the pad of your finger at the center of the sensor

The pad is the fleshy part of the finger, located in the middle of the first segment. Be sure that the pad (not the tip) covers as much of the sensor window as possible so that the *core* of your fingerprint can be scanned. It is okay to place your finger at an angle.



Apply light pressure

Apply pressure lightly and evenly during the scanning process. Use as much pressure needed to hold a piece of paper between your fingers. Pressing too hard may result in a dark or blurred fingerprint.

Keep your finger still

The LED will light up to scan your fingerprint. Keep your finger in place while your fingerprint is scanned.

How to find the core of your fingerprint

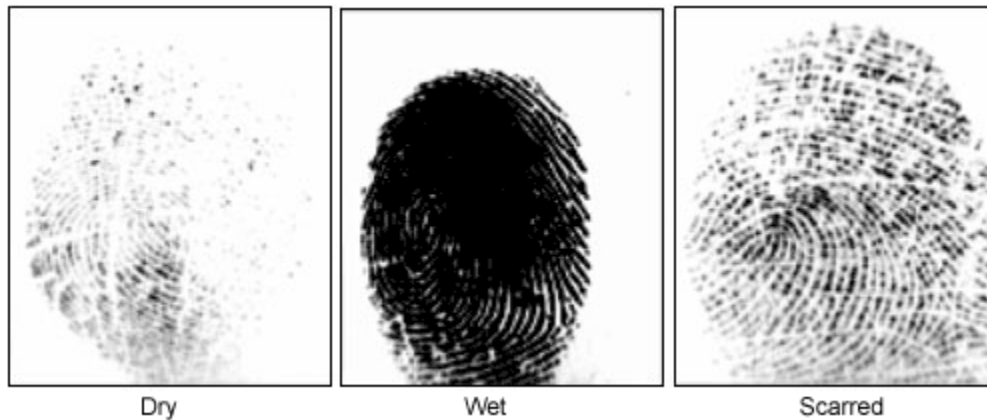
The core of your fingerprint is located between the middle and lower edge of the first segment of your finger. An easy way to ensure that the core is scanned is to place your finger on the reader so that the first joint of the finger aligns with the bottom edge of the sensor window.

If you cut or injure your finger

As a precaution, it is best to enroll more than one finger so that if one finger becomes unavailable for authentication, you will have an alternate finger to use. Most biometric applications provide the option to enroll multiple fingers. If your application features a password or PIN back-up, you can use this feature in case no finger or fingerprint device is available. If none of these options work, please contact your IT administrator or technical support provider for help.

Problematic fingerprints

By following the above guidelines, you should be able to get consistently good results. However, certain skin conditions or environments may cause poor fingerprint images. Damp skin may cause fingerprints that are too dark or smudged but can be remedied by wiping fingers before input. If your finger is extremely dry, you can safely use a moisturizing lotion before input. If these problems persist, you can by adjust the brightness settings for your device to get the best contrast and brightness levels. For more instructions, refer to the next section.



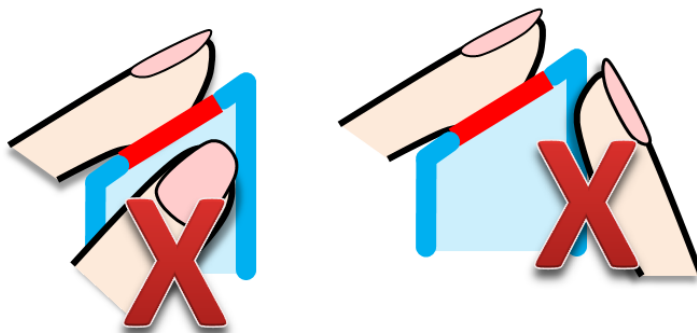
For Hamster readers equipped with Auto-On™

Do not place your finger too slowly or too softly

The Auto-On sensor might not detect your finger when it's placed too slowly or too softly on the reader. If the LED does not turn on, **remove your finger and wait for 5 seconds** to allow the sensor to reset. Then try again.

Do not wrap your fingers or hand around the top of the reader near the sensor

The Auto-On sensor might not detect your finger if your fingers are wrapped around the sides or back of the top of the Hamster. If the LED does not turn on, **remove your finger and wait for 5 seconds** to allow the sensor to reset. Then try again.

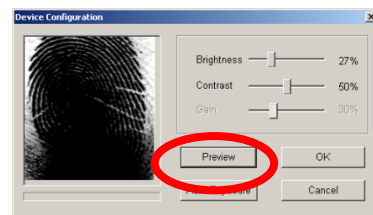
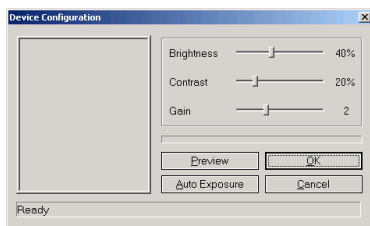


Avoid touching the sides and back of the Hamster Plus / Hamster IV near the top.

3. How to Adjust Your Reader

Depending on the software application you are using, you may have the option to adjust the scan settings on your fingerprint reader to get better results. For some applications, the Smart Capture™ feature will automatically adjust the scan settings each time you scan a finger. If Smart Capture is not enabled, you can use the following instructions to adjust your reader.

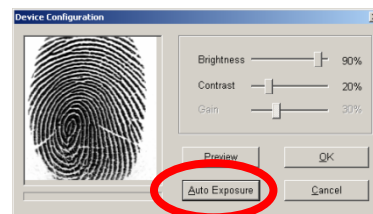
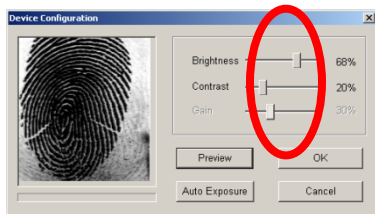
1. From your software application, open the option to adjust the scan settings of your fingerprint reader. It might be called “Setting,” “Brightness,” or “Adjustment”.
2. When a window like below opens, place your finger on your fingerprint reader, and click **Preview** to view your fingerprint.



Example of fingerprint that needs to be adjusted

3. For **manual adjustment**, click and drag the sliders, place your finger on the reader, and then click **Preview** again.
4. To let the system automatically determine optimal settings, place your finger on the reader and then click **Auto Exposure**. Hold your finger still while the settings automatically change incrementally. This may take several seconds. Once completed, place your finger on the reader again, and then click **Preview** to view the improvement of your fingerprint.

If the resulting fingerprint does not improve, you can further adjust the settings by moving the sliders.



The fingerprint has improved after adjusted

5. To keep the new settings, click **OK**. To go back to the original settings, click **Cancel**.

4. How to Care for Your Reader

SecuGen fingerprint readers do not require any special maintenance except for occasional cleaning of the sensor window if it gets dirty. Normal oil, residue or smudges on the sensor window should not cause problems or interfere with scanning fingerprints. The sensor window was designed to withstand heavy use and extreme conditions including heat and cold. It does not have any coatings that can get damaged because it is made of a hard, quartz-like material that resists scratches, etching, and damage from environmental elements.

If you wish to clean the surface of the sensor window

- You can safely use a tissue, paper towel or cloth to wipe down the window. To remove stubborn dirt, you can wipe the window with a cloth dampened with a soap solution. Squeeze out excess liquid before wiping with the damp cloth.
- Cleaning agents like glass cleaners and anti-bacterial wipes may be used without harming the sensor. However, as with most plastic material, the housing of the unit may be damaged if strong solvents, acids or caustic solutions are used.
- Do not pour liquids directly onto the sensor or device, as the liquid might seep into the underlying components and cause damage.

5. About Fingerprint Privacy

Fingerprint images are never stored.

SecuGen fingerprint recognition technology is based on minutiae, the feature points around the core of your fingerprint. When a fingerprint is scanned, only a portion of the minutiae are sampled, and then processed by an extraction algorithm and converted into a template. After the template is formed, the fingerprint image is deleted. When fingerprints are used in the form of templates, there is no need to store fingerprint images.

Fingerprint images cannot be reconstructed from minutiae or templates.

The minutiae that are sampled from a fingerprint do not have enough information to recreate an image of the fingerprint. Additionally, minutiae cannot be extracted from a template because the mathematical conversion from minutiae to template is irreversible. As an extra measure of security, depending on the application you are using, templates may be secured using advanced encryption to further protect the template data.

6. Troubleshooting

Windows is warning me that the driver has not passed

Windows Logo testing.

If you are a Windows user and you see a warning box that says the SecuGen device driver has not passed Windows Logo testing, please click the “Continue Anyway” button. Our drivers have been tested thoroughly with all Windows version listed in System Requirements. Drivers are regularly updated for Windows compatibility and should be automatically downloaded from Microsoft's Windows Update web site and included in future Windows Service Packs. (www.windowsupdate.com).

My SecuGen USB reader does not power on.

If you have connected the reader to a USB port in a USB keyboard or hub, verify that the USB keyboard or hub has its own power-supply. Some SecuGen readers use up to 150 mA of electric current, so if they are not already connected directly to the computer, then they should be connected to hubs that are self-powered.

My USB reader powers on but cannot scan fingerprints.

When you have other high-speed USB devices, such as a digital camera or scanner, connected to your computer, the SecuGen reader cannot be used at the same time. SecuGen USB readers may use up to 66% of USB 1.1 bandwidth, and therefore cannot function concurrently with any other device using more than 40% of the bandwidth. Close the programs that use the other USB devices, and if necessary, disconnect those devices, before using the SecuGen reader.

My USB reader powers on but sometimes cannot scan fingerprints.

If you are using a reader that is equipped with Auto-On™, you might be experiencing interference with the Auto-On sensor. To reset the Auto-On sensor, remove your finger from the reader and wait 5 seconds. To prevent this problem, see the tips in section 2.

My OptiMouse is very slow.

When certain other mouse drivers are installed on your computer, the USB OptiMouse response may be slow. Click **Start > Control Panel > Mouse** and the **Operation** tab to adjust the speed of mouse pointer. If you cannot adjust the speed of mouse pointer, remove the other mouse driver from the system.

My OptiMouse doesn't work.

First verify that the OptiMouse is connected to the USB port correctly. Then click **Start > Control Panel > System** and select the **Device Manager** tab to verify that the mouse drivers are installed correctly. If they are not installed correctly, repeat the driver installation process.

My USB reader is not recognized.

If you are using an FDU01 or FDU02 based reader, be sure to use the appropriate device driver from SecuGen's website at www.secugen.com/download. Although older FDU01 devices can work with FDU02 device drivers, readers based on FDU02 cannot work with FDU01 device drivers.

